



**31 STANTON ROAD
ASHBOURNE
DE6 1SH**

PRICE: £390,000





31 STANTON ROAD, ASHBOURNE, DE6 1SH

An excellent four bedroom detached family home offering spacious and flexible accommodation with driveway providing parking and an enclosed rear garden.

Having gas central heating and upvc double glazing, the property briefly comprises entrance hall, cloakroom, sitting room opening into the dining room, conservatory, fitted kitchen and utility room. The original garage has been converted into a home office and pantry but could equally be used as a ground floor bedroom with the potential to create an ensuite if required. On the first floor there are four bedrooms, the master having an ensuite shower room, along with a family bathroom.

The property is located within this popular residential area on the outskirts of Ashbourne town centre, conveniently located within walking distance of local amenities.

AN INTERNAL VIEW IS HIGHLY RECOMMENDED

ACCOMMODATION

A timber front entrance door opens into the

Entrance Hall with staircase leading to the first floor, understairs storage cupboard, radiator and doors lead to the office, sitting room, kitchen and cloakroom.

Cloakroom comprising low flush wc, wash hand basin with tiled splashback, tiled flooring and front aspect upvc double glazed window.

Sitting Room 5.22m measured into the bay window x 3.67m (17'2" measured into the bay window x 12'1") having a coved ceiling, laminate flooring, feature fireplace with inset gas fire, radiator, upvc double glazed bay window and opening into the

Dining Room 3.37m x 2.60m (11'1" x 8'7") having a coved ceiling, laminate flooring, radiator and sliding patio doors opening into the conservatory.

Conservatory 3.43m x 2.56m (11'3" x 8'5") having laminate flooring, upvc double glazed windows and sliding patio doors opening onto the garden.

Fitted Kitchen 2.97m x 3.27m (9'9" x 10'9") comprising a modern range of wall and base units and drawers with larder cupboard and wine rack. Integrated refrigerator and freezer, gas cooker point with space for range style cooker and stainless steel extractor hood above. Work surface with inset one and a half bowl ceramic sink and drainer unit with complimentary tiled splashback, laminate flooring, rear aspect upvc double glazed window and radiator. A door leads into the

Utility Room 2.70m x 1.60m (8'10" x 5'3") comprising base units, drawers and wall mounted cupboard matching those in the kitchen, work surface with inset stainless steel sink and drainer unit with tiled splashback. Space for two appliances with plumbing for automatic washing machine and dishwasher. Wall mounted Worcester gas central heating boiler, rear aspect upvc

double glazed window and radiator. Partially glazed side entrance door and door leading into the

Pantry 2.68m x 1.37m (8'9" x 4'5") with shelving, light & power and space for refrigerator.

Home Office 4m x 2.68m (13'2" x 8'9") having a front aspect upvc double glazed window and radiator.

First Floor Landing with access to the roof space, in built storage cupboard and doors lead to the bedrooms and family bathroom.

Bedroom One 3.70m x 3.57m (12'2" x 11'9") comprising a range of fitted bedroom furniture comprising two double wardrobes and drawers to each bedside. Front aspect upvc double glazed window and radiator. A door leads into the

En Suite Shower Room 2.69m x 1.56m (8'10" x 5'2") overall measurements. Comprising shower cubicle with mains control shower, low flush wc and pedestal wash hand basin. Partially tiled

walls, radiator and side aspect upvc double glazed window.

Bedroom Two 5.77m x 2.70m (18'11" x 8'10") comprising front and rear aspect upvc double glazed windows and two radiators.

Bedroom Three 2.71m x 3.55m max into the door recess and 2.75m min (8'10" x 11'8" max into the door recess and 9' min) Having a rear aspect upvc double glazed window and radiator.

Bedroom Four 3.02m x 2.34m (9'11" x 7'8") with rear aspect upvc double glazed window and radiator.

Family Bathroom 2.47m x 2m (8'1" x 6'7") comprising bath with shower attachment to the taps, pedestal wash hand basin and low flush wc. Tiling to half height, laminate flooring, in built airing cupboard, front aspect upvc double glazed window and radiator.

OUTSIDE

There is a lawned fore garden with well stocked border and tarmacadam driveway providing parking. At the side of the property there is a covered and enclosed storage area measuring 6.17m x 1.95m (20'3" x 6'5") A useful storage area for bikes and tools etc with lockable timber doors to both the front and rear, providing access to the rear garden. The rear garden is enclosed by timber fencing and a brick built wall and is mainly laid to lawn with well stocked borders and a paved patio seating area.

SERVICES

It is understood that all mains services are connected.

FIXTURES & FITTINGS

Other than those fixtures and fittings specifically referred to in these sales particulars no other fixtures and fittings are included in the sale. No specific tests have been carried out on any of the fixtures and fittings at the property.

TENURE

It is understood that the property is held freehold but interested parties should verify this position with their solicitors.

COUNCIL TAX

For Council Tax purposes the property is in band E.

EPC RATING C.

VIEWING

Strictly by prior appointment with the sole agents Messrs Fidler-Taylor & Co on 01335 346246.

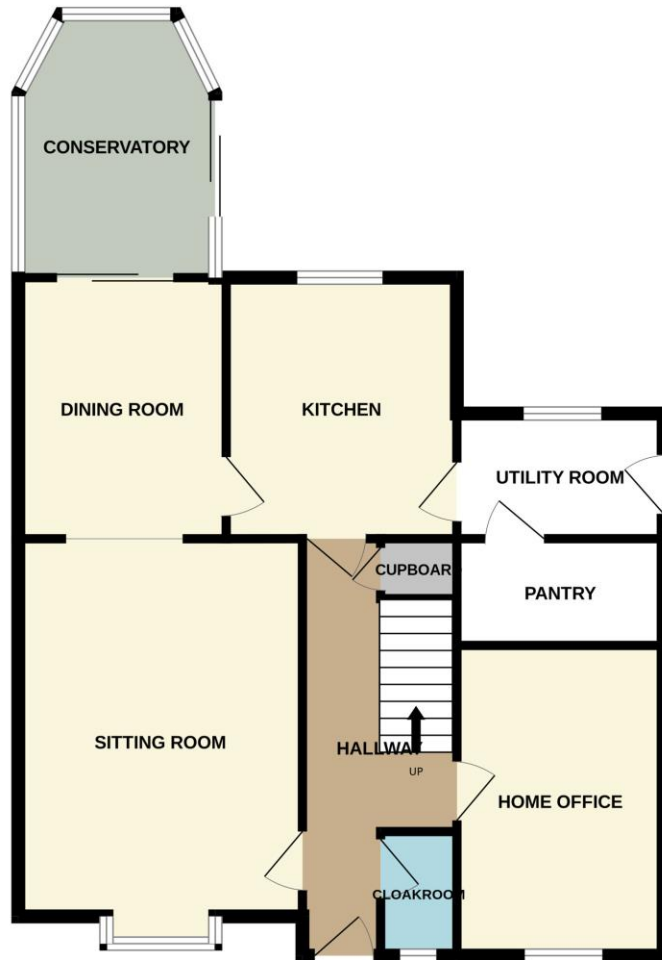
Ref FTA2738







GROUND FLOOR
808 sq.ft. (75.1 sq.m.) approx.



1ST FLOOR
669 sq.ft. (62.1 sq.m.) approx.



TOTAL FLOOR AREA : 1477 sq.ft. (137.2 sq.m.) approx.

Whilst every attempt has been made to ensure the accuracy of the floorplan contained here, measurements of doors, windows, rooms and any other items are approximate and no responsibility is taken for any error, omission or mis-statement. This plan is for illustrative purposes only and should be used as such by any prospective purchaser. The services, systems and appliances shown have not been tested and no guarantee as to their operability or efficiency can be given.
Made with Metropix ©2025



Independent Estate Agents, Surveyors, Valuers & Auctioneers

Distinctive Homes for Discerning Purchasers

11 Church Street, Ashbourne, Derbyshire, DE6 1AE

Telephone 01335 346246

also at

MATLOCK 01629 580228

www.fidler-taylor.co.uk

Note: These particulars are produced in good faith with the approval of the vendors and are given as a guide only. All measurements are approximate. The particulars form no part of a contract or lease.